



ShowTime International
P.O. Box 4200
Lago Vista, TX 78645
512-267-7105
www.showtimeint.com

AUSTIN WINTER SHOWCASE

Liberty Hill HS
16500 W. State Hwy 29
Liberty Hill, TX 78642

Registration- Saturday usually 8:00am

Schedule- will be posted online, the Thursday before the contest.

Performance Area-Main gym

Judges Area-See diagram

Team Entrance & Exit-See diagram

Floor Surface-Wooden gym floor

Dressing Area-Assigned classrooms and locker rooms

Practice Area-Auxiliary gyms

Results- Directors pick up score sheet packets at the awards table after the Awards Ceremony. Results will be posted on our website one week after the contest.

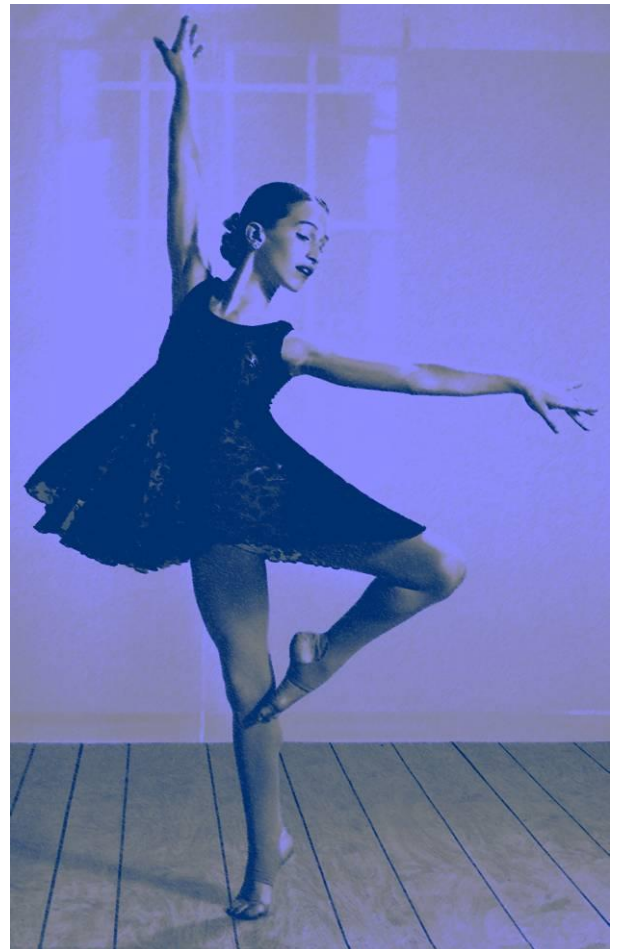
Admission- For current admission prices, please click on the red Admissions button on the right side of the contest page.

Spectator Parking-See diagram

Bus Parking-See diagram

Concessions: No outside food or drink.

There will be a concession stand available for the teams and spectators. Please support our hostesses and purchase your meals from their concession stand. They appreciate it!



[General contest information can be found on our contest page. Click the red buttons on the right side of the contest page.](#)

LIBERTY HILL HS CONTEST AREA

Judges

Spectators

